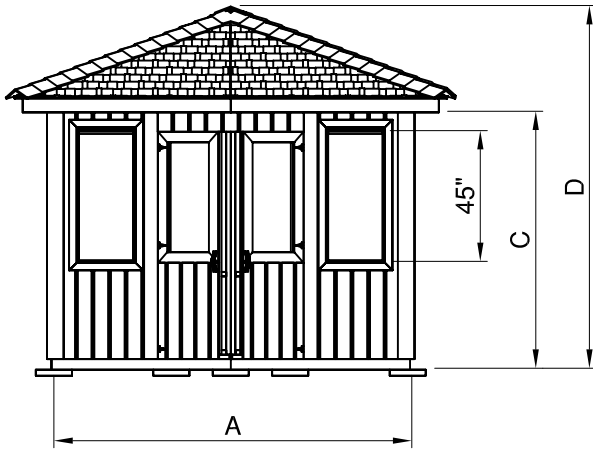
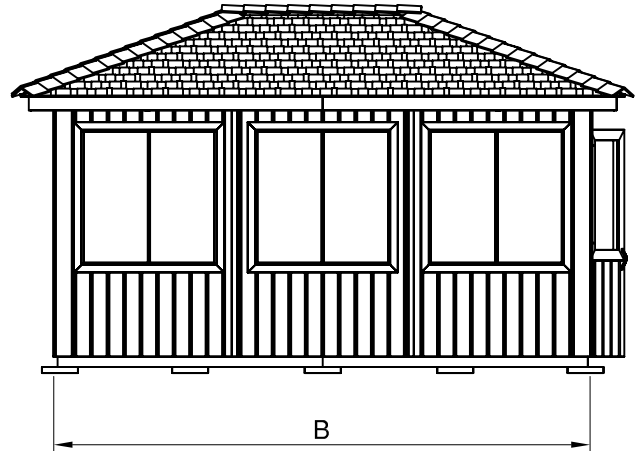


Specifications for 10' x 12' & 10' x 15' Gazebos

- Your Gazebo is constructed of Western Red Cedar.
- All framing components are nominal 2"x 4" in size (unless noted otherwise)



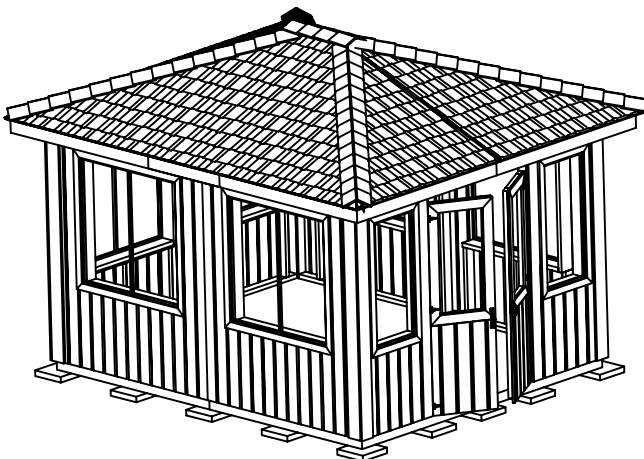
FRONT VIEW



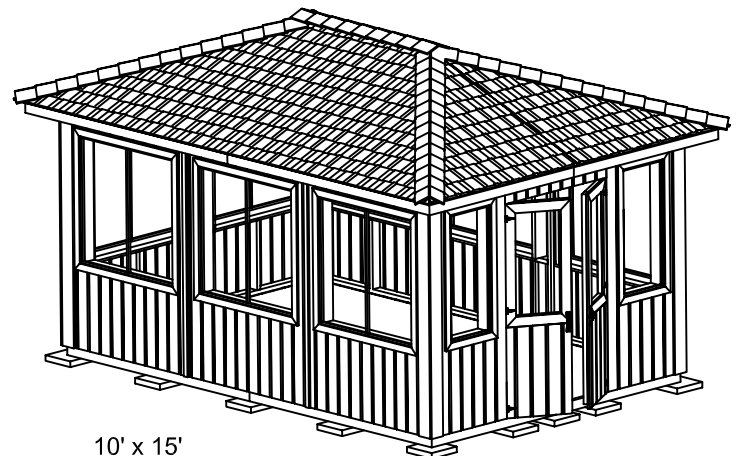
SIDE VIEW

Measurements for Gazebos (10'x12' & 10'x15')

Model	10' x 12'	10' x 15'
Area	118.1 Sq. Ft.	145.8 Sq. Ft.
Dimension		
A	119"	119"
B	143"	176-1/2"
C	89"	89"
D	118"	118"
Doorway	41-1/2" x 72-3/4"	41-1/2" x 72-3/4"
Weight	2850 lbs	3250 lbs



10' x 12'



10' x 15'